

# CAMS 4H-3P

AUTOMATIC RHINESTONE MACHINE

**SWF**  
**EAST**  
Number One in Apparel Decorating Equipment



## Introducing A Fast, Easy & Affordable Way To Create Your Own Custom Rhinestones.

This revolutionary new rhinestone/rhinestud machine is truly changing the market in terms of cost, flexibility and speed for applications that require medium to high production of the same or variable design motifs. Never before has there been a cost effective, high speed, 6 color machine with the ability to do stones and studs in various sizes as with this breakthrough piece of equipment. The **CAMS 4H-3P** actually produces four times the production at less than two thirds of the cost of its closest competitor.

The new CAMS machine is the absolute winner for any application that requires maximum flexibility with the lowest time/money cost per piece. Placing 150 stones per minute, per head on four heads give an output of 600 stones per minute! This means that you can take an average rhinestone design of 300 stones and produce four pieces every two minutes, that's 120 Rhinestone transfers per hour. To put that in perspective you only have a labor cost of 10 cents per piece if your labor cost is \$12.00 per hour.

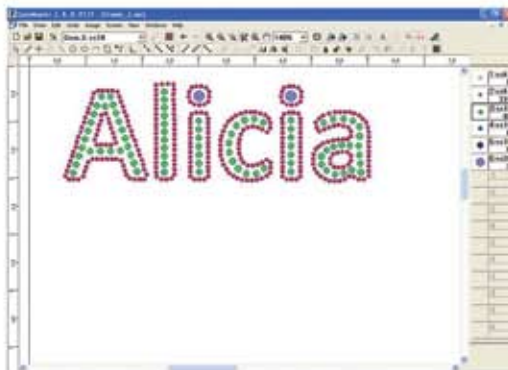




This four head, six color high speed machine has been designed with quality and reliability in mind and is backed by an industry leading two year warranty. Additionally our factory trained technicians perform a two-day on-site installation covering operations, maintenance, software and techniques so that you are up and running with no delay. For your long term benefit, our post sale support provided by our in-house trained technicians are always only a phone call away.

## Rhinestone Design Software

All rhinestone machines come included with the user friendly **Gem Master rhinestone design software** which allows you to make your own designs using up to 6 colors/sizes of rhinestones or metal studs. This rhinestone software has easy to understand drawing tools (line, circle & arc, with auto spacing for stones.), a rich library for different stones and sizes and the ability to turn any bitmap image into a rhinestone design. It also includes design simulation so it as easy as a "what you see is what you get" type of program.



We offer an optional model for advanced customization. The optional mode is equipped with a rotating X/Y board so you can set various shapes of stones and studs at any angle on a 11.8" x 11.8" rotating table.

### CAMS Automatic Rhinestone Machine Highlights:

- User friendly LED menu
- Simplified buttons for easy operation
- One touch start function for repeating last job
- Accessible magazine and parts feeder location
- Works with 6 colors and sizes of rhinestones
- Automatic positioning according to x y coordinates.
- Automatic change of parts feeders
- High sensitivity sensors prevent errors and interferences between stones.

Call an account representative  
**toll free 877-793-3278**  
 for a quote or more information  
 on the CAMS 4H-3P.

[www.swfeast.com](http://www.swfeast.com)

**SWF**  
**EAST**  
 Number One in Apparel Decorating Equipment



Use this machine to spice up your embroidery or digital and screen print designs with rhinestone highlights, significantly increasing the value allowing you to charge a premium price.